

# Chemtrol™ PC5000

## PROGRAMMABLE CONTROLLER

AUTOMATED WATER TREATMENT  
with PPM, ORP and pH Control

\* U.S. Patent 5,895,565

The **CHEMTROL™ PC5000** programmable controller features a revolutionary solid-state **PPM SENSOR** that gives easy-to-use, direct and reliable readings of **Free Chlorine (HOCL) Concentration** in water. This advanced controller introduces a new standard of sophistication in automated water treatment for many applications such as swimming pools, spas, cooling towers and industrial water treatment.

Unlike conventional amperometric sensors, this sensor is simple to install and operate because it does not require expensive reagents or special flow cells and is compatible with cyanuric acid (CYA) at all concentrations. It can also be retrofitted on existing **CHEMTROL™ PC3000 and PC6000** controllers.

For the first time in automated water treatment, the combination of PPM and **ORP (Oxidation-Reduction Potential)** sensors gives the operator the capability to control either chlorine residual or oxidizing activity. This also makes it ideal for control of a separate oxidizer in the **AUTOMATED CHLORAMINE TREATMENT (ACT)** program.



### STANDARD FEATURES

- ✓ **PPM MONITORING and CONTROL** of chlorine concentration,
- ✓ **ORP CONTROL** of oxidizer with shock treatment program,
- ✓ **pH CONTROL** with acid/base feed and probe rinse program,
- ✓ Programmable **CHEMICAL SAVINGS** cycles,
- ✓ **TEMPERATURE READOUT** with programmable heater control
- ✓ **LANGELIER SATURATION INDEX** for water balance,
- ✓ **AUTOMATIC DATA LOGGING** for up to 999 tests,
- ✓ **FULL SCREEN MENUS** in English, French or Spanish,
- ✓ Screen displays in **US or METRIC UNITS**.

### OPTIONS

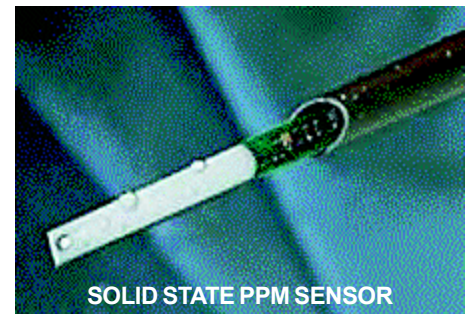
- ✓ **CONDUCTIVITY** or **Total Dissolved Solids (TDS)** monitoring,
- ✓ **WATER LEVEL CONTROL** with electronic sensor and fill valve control,
- ✓ **MAIN PUMP CONTROL** and **FLOW RATE** with cumulative display,
- ✓ **INFLUENT/EFFLUENT PRESSURE** monitoring with safety alarms,
- ✓ **REMOTE COMPUTER OPERATION** and **GRAPHIC DATA DISPLAY**,
- ✓ **ETHERNET/INTERNET** network communications.

### SIMPLE AND RELIABLE

The **CHEMTROL™ PC5000** is a user-friendly and reliable controller that is easy to install and operate. All menus are displayed in clear language in English, French or Spanish with choice of US or metric units. Each unit is supplied with a comprehensive operation manual, on-site startup and training by a Qualified Dealer and a **FIVE-YEAR electronics warranty**.

Technical support is available through our network of Qualified Dealers and by computer with the **CHEMCOM™** Remote Operation Program.

Visit our Web Site at [www.sbcontrol.com](http://www.sbcontrol.com) or call today for a free demo CD.



SOLID STATE PPM SENSOR



REMOTE COMPUTER OPERATION



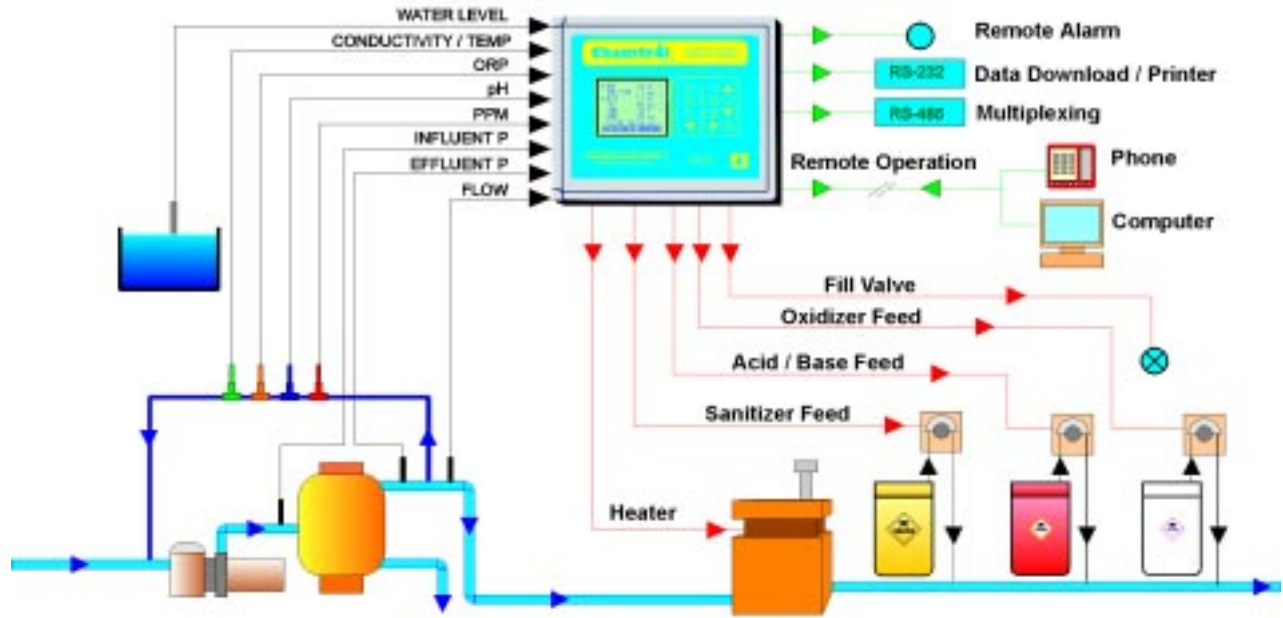
**SANTA BARBARA CONTROL SYSTEMS**

5375 Overpass Road  
Santa Barbara, CA 93111 - USA

TOLL-FREE 800-621-2279  
PHONE 805-683-8833  
FAX 805-683-1893  
INTERNET [www.sbcontrol.com](http://www.sbcontrol.com)

Leading in Automated Water Treatment Since 1976

## POOL/SPA INSTALLATION



## SPECIFICATIONS

<b>SCREEN DISPLAY</b>	8 lines @ 22 characters
<b>ORP</b>	200-999 mV with oxidizer and/or reducer Programmable shock treatment and chemical saving cycles
<b>pH</b>	0-14 with acid and/or base feed
<b>SANITIZER</b>	0-10 ppm (mg/l)
<b>CONDUCTIVITY / TDS</b>	0-20,000 $\mu$ S/cm conversion factor for TDS
<b>TEMPERATURE</b>	0 to 140 F (-18 to 60C)
<b>LANGELIER INDEX</b>	calculated from pH, Temp, total alkalinity and calcium hardness water balance display
<b>SENSOR CALIBRATION</b>	1, 2 or 3 points
<b>CONTROL MODES</b>	Off, Manual, Auto, Timer ON/OFF or Proportional Feed
<b>ALARMS</b>	High/Low out-of-range Total feed time and Overfeed Patented Probe Alert* Safeguard Visual, audio and external alarms
<b>DATA LOGGING</b>	On-board memory for 999 tests RS232 communication port for local download and printing
<b>REMOTE OPERATION</b>	Data communication modem CHEMCOM™ remote software and graphical display under Windows™ Ethernet/Internet communications
<b>MULTIPLEXING</b>	RS485 port for multiple connections
<b>MECHANICAL</b>	13 x 11 x 6 1/2 in. (34 x 29 x 17 cm) Rain and splatter proof NEMA Type 4X
<b>ELECTRICAL</b>	10 A / 110 or 230 V with selector switch All output relays 5 A
<b>WARRANTY</b>	5-year electronics 1-year sensors
<b>SHIPPING</b>	19 x 19 x 11" (48 x 48 x 28 cm) carton Weight: 21 lbs (9.5 kg)

## MODEL SELECTION

### STANDARD FEATURES

- ✓ ORP CONTROL
- ✓ PPM CONTROL
- ✓ pH CONTROL
- ✓ HEATER CONTROL
- ✓ LANGELIER SATURATION INDEX
- ✓ AUTOMATIC DATA LOGGING
- ✓ REMOTE ALARM
- ✓ RS232 FOR DIRECT DOWNLOAD
- ✓ RS485 FOR MULTIPLEXING
- ✓ BYPASS LINE ASSEMBLY

### OPTIONS

- CONDUCTIVITY/TDS MONITORING
- AUTOMATIC WATER LEVEL CONTROL
- INFLUENT / EFFLUENT PRESSURES
- REMOTE COMPUTER OPERATION
- ETHERNET/INTERNET COMMUNICATIONS
- FLOW RATE MONITORING
- RECIRCULATION PUMP CONTROL
- SENSOR CELL ASSEMBLY
- 4-20mA OUTPUT

### REPRESENTED BY: