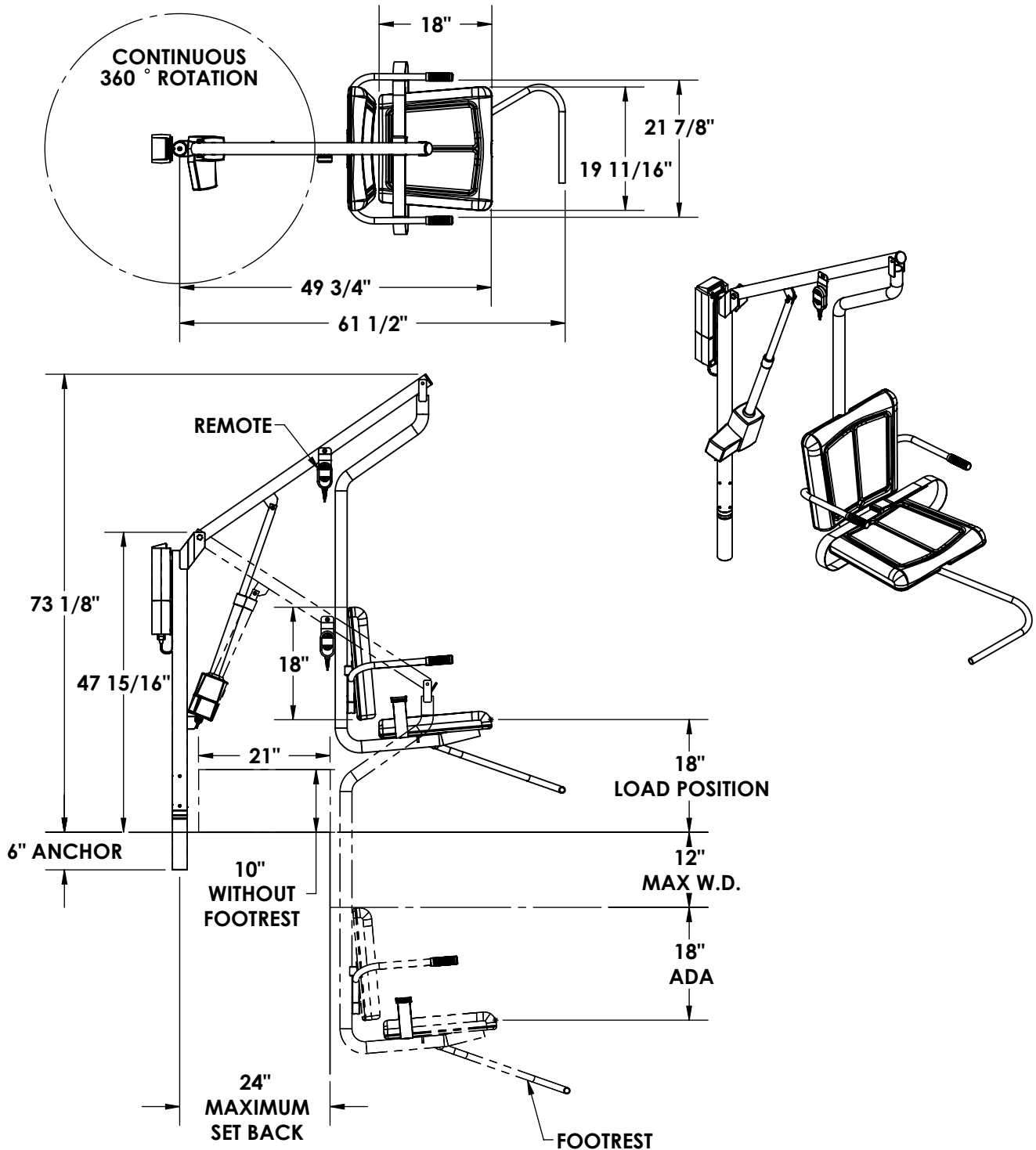


**SWIM LIFT
MODEL - LIFT ASPEN BP300**



NOTE:

1 DIMENSIONS VARY WITH SPECIFIC APPLICATIONS.
SPECIFICATIONS ARE NOMINAL AND ARE SUBJECT TO CHANGE.
PLEASE CONTACT SPECTUM PRODUCTS FOR CUSTOM APPLICATIONS.

SPECTRUM
Products

7100 Spectrum Lane
Missoula, Montana 59808
406.542.9781 * 800.791.8056
Fax: 406.542.1158
www.spectrumproducts.com

ENGINEERING DATA

PRODUCT:	LIFT ASPEN BP300
PRODUCT #:	26010
REVISION:	A
MATERIAL:	300 SERIES STAINLESS STEEL

Swim-Lift® Series, Aspen BP300, part number 26010

The lift shall be designed for use on aboveground or in-ground swimming pools and/or spas and shall accommodate installation at a range of 6-24" from the pool wall to centerline of anchor. The lift shall be user-operated, battery powered - requiring no more than a 24-VDC, rechargeable, battery for operating power, capable of transferring (rotating) payload over a wall height of 10", and shall be rated for a 300 lb. load capacity.

The assisted access lift shall consist of the following components:

Linear Actuator

The battery-powered ram shall bolt to the lift superstructure and shall have a maximum in push thrust of 10,000-N. The driver shall be a permanent magnet motor, 24-VDC. The unit shall have built in limit switches, shall operate at 40-db noise level or less, and be approved according to EN 60601-1 and UL 2601-1.

Rotational Actuator

The 24-VDC rotational motor direct drive system allows for continuous mast rotation in either direction (360°).

Operating Controls and Power Source

Control handset must be operable from pool or deck and shall be designed for ease of use. Control handset shall be molded plastic, encase control wiring, and be sealed to prevent water damage. Control buttons for up, down, right, and left directional control shall be provided.

The power source is to be a 24-VDC rechargeable battery. A battery charger, wall current to charge, with mounting bracket and electrical power cord, for remote installation, will be provided with the lift.

Lift Superstructure

The boom arm shall be constructed of 1.90" O.D. x 1.50" I.D., 304L series stainless steel tube. The mast arm shall be constructed of 2.375" O.D. x 2.067" I.D. 304L series stainless steel tube.

Seat Assembly

The seat shall be constructed of a 304 stainless steel frame attached to a polymer seat assembly with removable armrests. This assembly shall be attached to the lift superstructure by a 1.9" x 0.145" 304 stainless steel Tube.

Footrest

A vertically self-adjusting footrest is provided.

Warranty

Two year limited warranty.



7100 Spectrum Lane ~ Missoula, Montana 59808
800.791.8056 ~ 406.542.9781
Fax: 406-542-1158
www.spectrumproducts.com